

KIBO Fire Truck

Light Bulb, LIGHT ON blocks, Stationary Art Stage

KIBO 15+

WHAT'S THIS?

Clang, clang, clang! We need the KIBO fire truck to help. Put on the flashing lights and drive!



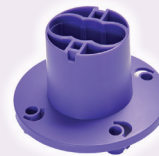
7

GET READY!

KIBO's LIGHT ON blocks make the light bulb light up.



KIBO's art stage allows decorations to be added while leaving room for modules.



Connect the purple pedestal to the rectangular art platform. Insert the four tabs into the four holes, then twist to lock.

The orange spacer connects the stage to KIBO.

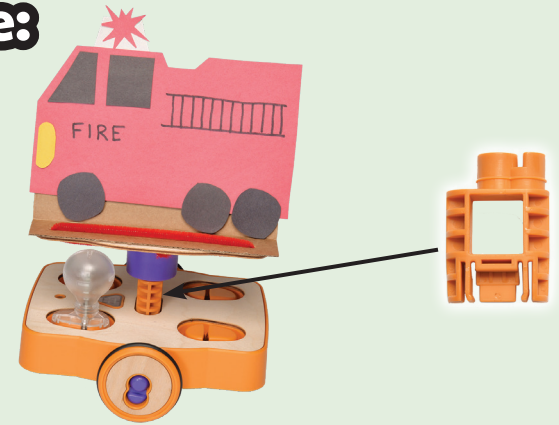


Build:



Attach KIBO's wheels, motors, and light bulb.

Make:



Create a fire truck on KIBO's art platform. Attach the art platform to KIBO's center socket using the spacer.

1 2
3 4

Code:

Flash the siren light to warn other cars, then drive to help!



Play:

Build or draw a town for your KIBO fire truck to help.



KIBO's horn warns people to make way!

